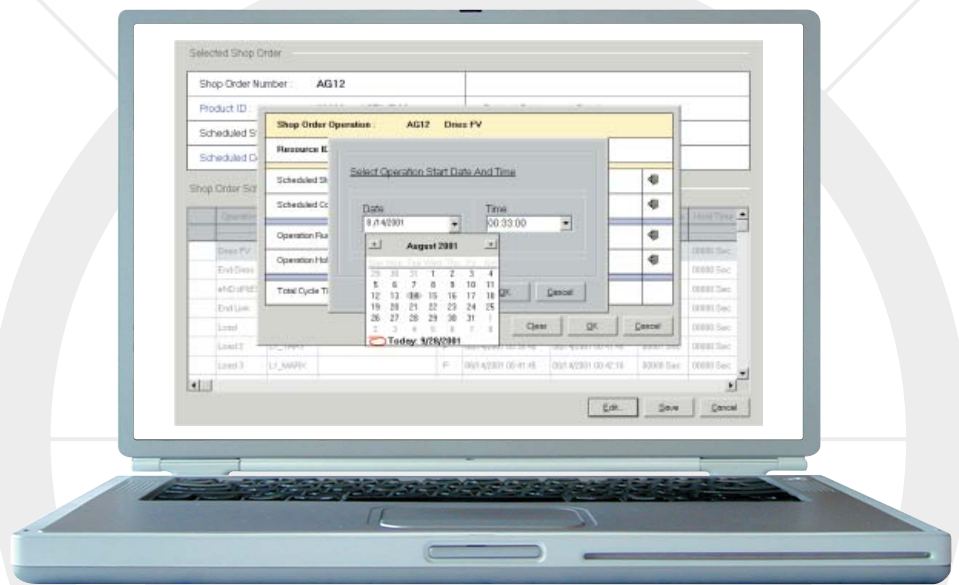


USCCG's Time-Phased Scheduling System Helps Ensure an Uninterrupted Production Process

Key Features

- Creates time-phased resource schedules
 - Generates time-phased material movement schedules and pick lists
 - Allows forward scheduling of orders based on resource availability and/or business rules
 - Allows back scheduling based on customer requirement dates
 - Allows scheduling in batch or real time modes
 - Synchronizes resources to avoid conflicts using established business rules
 - Optimizes throughput potential by minimizing planned downtime due to changeovers and washouts
-
- Runs on Microsoft Windows™ technology for ease of use
 - Features user-friendly graphic interface
 - Customized for each client
 - Accommodates user-defined business rules
 - Supports visual management
 - Offers multiple constraint conflict resolution options
 - Offers forward, backward and automatic scheduling options

This unique enabler helps you make more productive use of your equipment, people, materials and tooling



USCCG's time-phased scheduling system is an advanced planning and scheduling tool that considers all resources identified on routers when calculating operation start/end times, creating material movement schedules, coordinating tooling schedules and determining labor requirements. As a result, you'll be able to identify and avoid resource conflicts before they happen to ensure an uninterrupted production process.



Other USCCG Automated Solutions

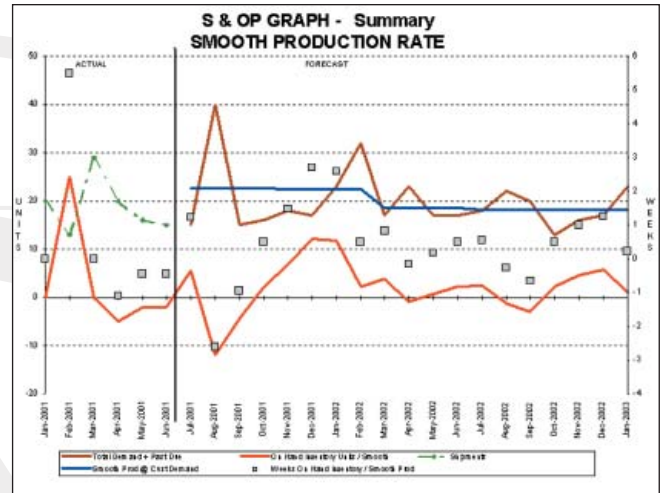
The Time-Phased Scheduling System is only one of several USCCG automated business solutions that are organized into five modules of two to four components each. These modules can be “bolted on” to existing ERP systems, mixed and matched, or used on a stand-alone basis as appropriate.

The first of these solutions is the *supply chain management* module which consists of a sales and operations planning component and an inventory management component. The second or *finite planning* module provides capacity planning functionality.

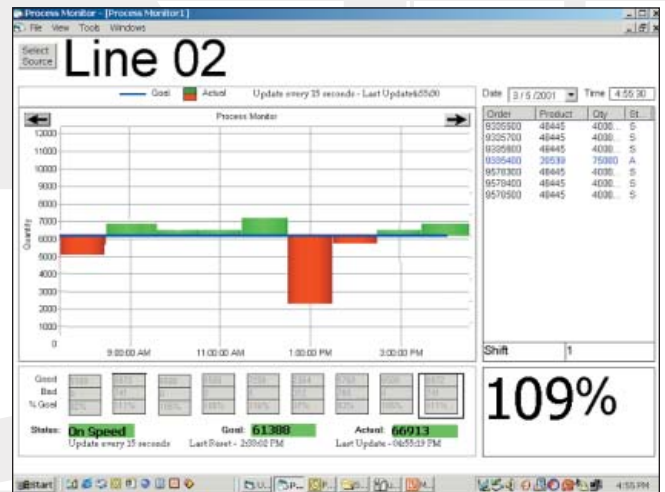
The third is a *finite scheduling* module that consists of a materials management component and a time-phased scheduling component, while the fourth or *shop floor control* module includes a process monitor and a shop floor control component. The fifth, a *shop floor reporting* module, includes a data analyzer and a report manager.

Collectively, these solutions, developed over 35 years and now automated, provide a powerful set of business tools to help improve your operating effectiveness.

If you would like to learn more about USCCG's automated business solutions, call us at (800) 621-6943 or visit our web site at www.usccg.com to contact the business development executive nearest you.



The sales and operations planning system helps establish appropriate sales targets, inventory levels and production rates for various levels of forecast market demand. As a result, you'll be able to smooth out your operation from front to back and avoid the all-too-common problems of material shortages, excessive inventories, manufacturing overtime and customer dissatisfaction.



The shop floor control system collects and displays production information as it becomes available. Users are able to review, edit and analyze real time data. Operators are able to see and evaluate their work as it takes place, while supervisors are better equipped to prioritize their time based on what's happening at the moment.



First we make it work. Then we make it last.™

Principal Locations:

6200 Courtney Campbell Cswy, Tampa, FL 33607 (813) 636-4004
 875 North Michigan Avenue, Chicago, IL 60611, (312) 944-5920
 5925 Airport Road, Mississauga, ON L4V 1W1, (905) 673-2600

www.usccg.com

© USC Consulting Group, LLC

