

# USCCG's Shop Floor Control System Provides Supervisors and Operators the Information They Need When and Where They Need It

## Key Features

- Interfaces with automated data collection systems
  - Compares planned to actual production data
  - Provides real time tracking of orders through the production process
  - Produces downtime and opportunity Pareto charts on demand
  - Produces resource performance and schedule attainment graphics and reports
  - Presents shift summary information for management and supervisor review
- 
- Runs on Microsoft Windows™ technology for ease of use
  - Features user-friendly graphic interface
  - Customized for each client
  - Produces reports on-line and in hard copy
  - Generates electronic alarms
  - Supports visual management
  - Allows for schedule attainment tracking
  - Prioritizes needed action

*This unique enabler helps you drive down and still control fact-based decision-making at the level where it will make the greatest impact*



USCCG's shop floor control system collects and displays production information as it becomes available. Users are able to review, edit and analyze real time data. Operators are able to see and evaluate their work as it takes place, while supervisors are better equipped to prioritize their time based on what's happening at the moment.



# Other USCCG Automated Solutions

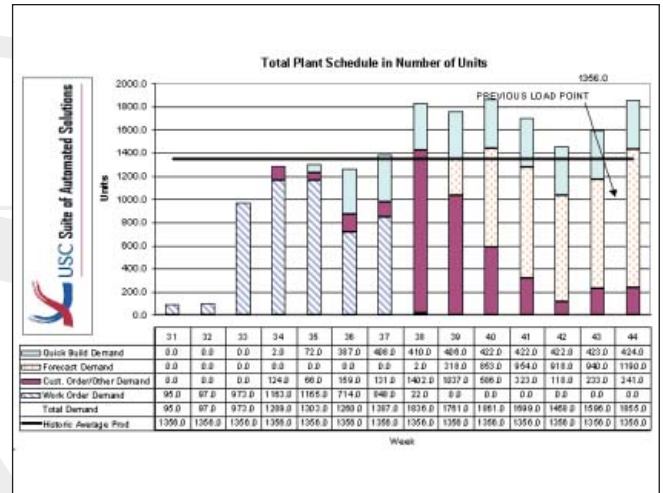
The Shop Floor Control System is only one of several USCCG automated business solutions that are organized into five modules of two to four components each. These modules can be “bolted on” to existing ERP systems, mixed and matched, or used on a stand-alone basis as appropriate.

The first of these solutions is the *supply chain management* module which consists of a sales and operations planning component and an inventory management component. The second, or *finite planning* module provides capacity resource planning functionality.

The third is a *finite scheduling* module that consists of a materials management component and a time-phased scheduling component, while the fourth, or *shop floor control* module includes a process monitor and a shop floor control component. The fifth, a *shop floor reporting* module, includes a data analyzer and a report manager.

Collectively, these solutions, developed over 35 years and now automated, provide a powerful set of business tools to help improve your operating effectiveness.

If you would like to learn more about USCCG’s automated business solutions, call us at (800) 621-6943 or visit our web site at [www.usccg.com](http://www.usccg.com) to contact the business development executive nearest you.



The capacity resource planning system provides a realistic view of available versus required resources at the item, product or family level. As a result, you’ll have a much clearer understanding of the people, machines, tooling and materials needed to achieve your production plan.

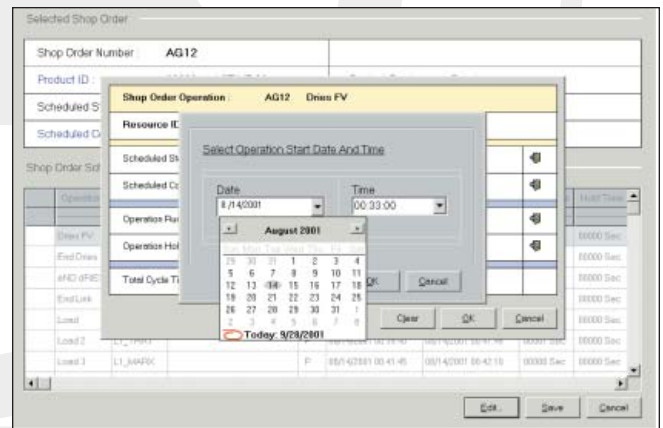


First we make it work. Then we make it last.™

Principal Locations:

6200 Courtney Campbell Cswy, Tampa, FL 33607 (813) 636-4004  
 875 North Michigan Avenue, Chicago, IL 60611, (312) 944-5920  
 5925 Airport Road, Mississauga, ON L4V 1W1, (905) 673-2600

[www.usccg.com](http://www.usccg.com)



The time-phased scheduling system is an advanced planning and scheduling tool that considers all resources identified on routers when calculating operation start/end times, creating material movement schedules, coordinating tooling schedules and determining labor requirements. As a result, you’ll be able to identify and avoid resource conflicts before they happen to ensure an uninterrupted production process.

