

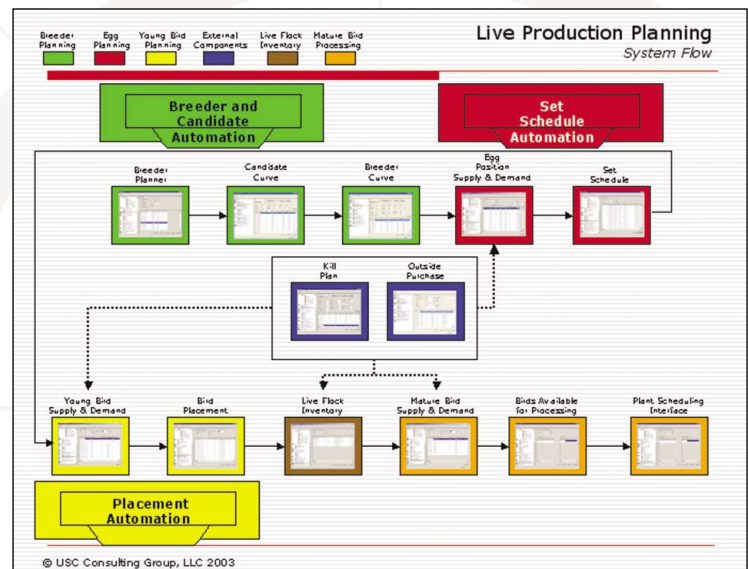
USCCG's Live Production Planning System Matches Current Live Inventory to Future Kill Facility Demand

Key Features

- Forecasts for breeder, hatchery and ranch capacity requirements
- Runs "what if" scenarios
- Schedules hatcheries and grow-out ranches to meet current and future demand
- Facilitates buy/sell decisions for eggs, young and mature birds years in advance
- Tracks critical processing indicators back to the breeder and flock
- Considers process maturity and operational learning curves when calculating resource requirements
- Performs long-range material requirements planning

- Runs on Microsoft Windows™ technology for ease of use
- Features user-friendly graphic interface
- Configured for each client
- Produces reports online and in hard copy
- Presents planning results in units and dollars

This unique enabler facilitates the buying and selling of eggs, young and mature birds; management of breeder stocks, hatchery set and bird placement schedules; and the grow-out cycle



USCCG's live production planning (LPP) system is part of a suite of automated business solutions. The LPP not only projects birds available for processing years in advance, but also features a supply and demand analysis (known as a position report) which allows the live production manager to identify potential shortfalls or excesses in inventories of eggs, young and mature birds, and plan accordingly.



Other USCCG Automated Solutions

The LPP component of the finite planning module is only one of several USCCG automated business solutions that are organized into five modules of two to four components each, and that can be "bolted on" to existing ERP systems, mixed and matched, or used on a stand-alone basis as appropriate.

The first of these solutions is the supply chain management module, which, in addition to a sales and operations planning component, includes an inventory management component. The second is the finite planning module, which provides capacity resource planning functionality. The third is a finite scheduling module that consists of a materials management component and a time-phased scheduling component.

The fourth, or shop floor control module, includes a process monitor and a shop floor control component. The shop floor reporting, or performance assessment module, includes a data analyzer and a report manager.

Collectively, these solutions, developed over 35 years and now automated, provide a powerful set of business tools to help improve your operating effectiveness.

If you would like to learn more about USCCG's automated business solutions call us at **(800) 621-6943** or visit our web site at www.usccg.com to contact the business development executive nearest you.



First we make it work. Then we make it last.®

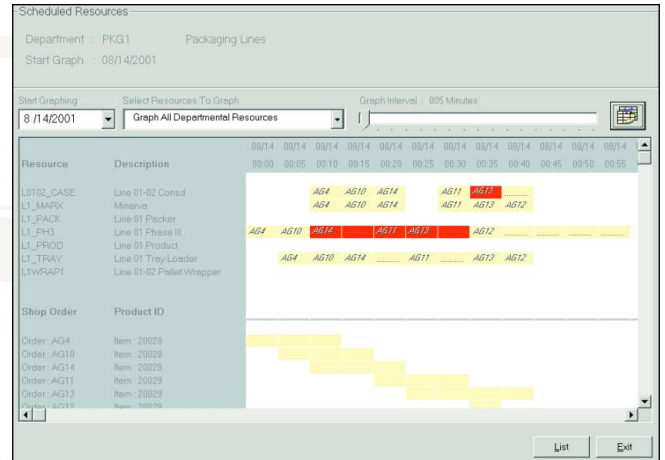
Principal Locations:

6200 Courtney Campbell Cswy, Tampa, FL 33607, (813) 636-4004

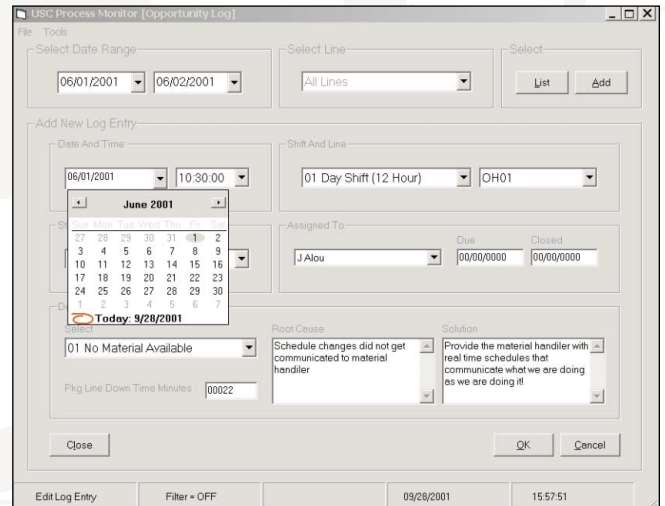
875 North Michigan Avenue, Chicago, IL 60611, (312) 944-5920

5925 Airport Road, Mississauga, ON L4V 1W1, (905) 673-2600

www.usccg.com



The time-phased scheduling system is an advanced planning and scheduling tool that considers all resources when calculating operation start/end times, creating material movement schedules, coordinating support resources and determining labor requirements. As a result, you'll be able to identify and avoid resource conflicts before they happen to ensure an uninterrupted production process throughout your supply chain.



The shop floor control system collects, analyzes and displays critical operational and financial metrics in either real time or over a user-defined period. Operators are able to see and evaluate their work as it takes place, while supervisors are better equipped to prioritize their time based on what's happening at the moment.

© USC Consulting Group, LLC

